

Spring 2012

Welcome

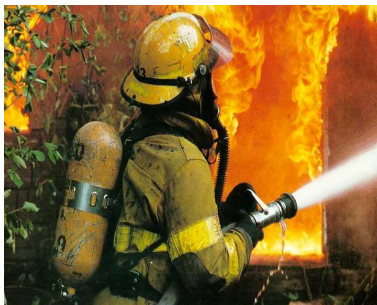
We welcome everyone back after the festive season, especially our new children. We trust that you all had a restful holiday period and are back into the swing of things. The Autumn term seems to have gone by so quickly! We have had a busy time with lots of fun and exciting activities and we are now well into the Spring Term...

Appreciations

Management and staff wish to express their gratitude to those parents/guardians for Christmas cards and gifts received.

Half-term Topic

This Half-term we are going to be talking about the emergency and safety services such as ambulance, police and fire. Children will also learn about traffic lights, road crossings, safety in the garden and in the general public. Our children have already enjoyed a trip to the library, and have made a good selection of books on the topic. They will also be taking part in dressing up, and acting out various parts, relating to the topic. Creative and cooking activities are also planned. Children have already made traffic lights and zebra crossings.



Inside this issue

Staff updates	2
New opening times	2
Reminders	3
Payments of fees	3
Consultations.....	3
'Name the Cuddly Toy'.....	3
Forthcoming events.....	3
2012 Term Dates.....	4

Important Dates

13/02	Half term begins (schools)
17/02	Half term ends (schools)
30/03	End of term (schools)



Reminders

Please ensure that:-

- Weekly reports received are returned with feedback
- your child's belongings are clearly marked with their name
- doors are securely shut behind you upon entering and leaving the building
- coins, toys, sweets or jewellery are not brought to the nursery
- medication and home prepared meals are labelled with your child's name and handed over to nursery staff
- the Nursery is informed of any children arriving late i.e after 09h00 Children age 2+ requiring breakfast must arrive no later than 08h45
- children's full set of spare clothing is maintained at all times
- A toothbrush, toothpaste, and hair brushes are provided and renewed every 3 months
- A pair of plimsolls or soft footwear is provided for indoors
- attendance times are adhered to at all times
- That you provide wellington boots for your child's outdoor play.
- That all buggies to be locked up when left in the buggy bay
- It is vital that the Nursery be informed of any delay in collecting your child.

Staff Updates

We are pleased to welcome new practitioners, Miss Leanne Edwards and Miss Jessica Sawyer to our team of staff. Miss Leanne will be attached primarily to the Toddler (Chrysalis Room) and Miss Jessica to the Babies (Caterpillar Room). We are sorry to say farewell to Miss Beatrice who has been with us for almost four years. We wish her all the best in her future endeavours.

New opening times and Office hours

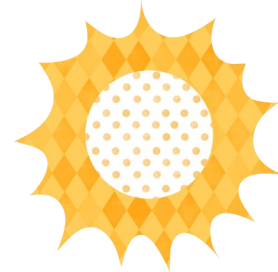
OPENING HOURS: As from April the Nursery's Operational hours will be from **07h00-19h00**. Details regarding the extended hours can be obtained from the office.

OFFICE OPENING HOURS: Please note that if you wish to speak to someone in the office about a specific matter, the office is open at the following times:

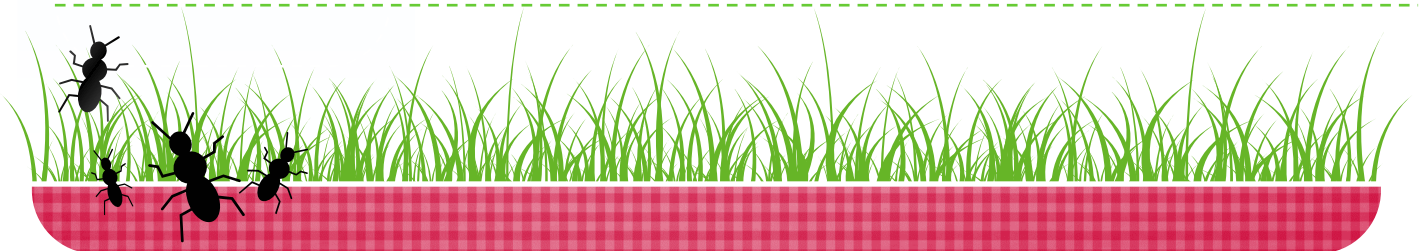
Mondays 08h30—09h30

**Wednesdays 08h30 - 09h30
and 16h30 - 17h30**

Management is quite happy to meet with parents/guardians at a mutually arranged appointment time other than that specified.

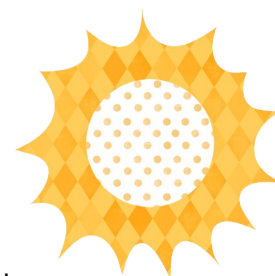


"Education is a natural process carried out by the child and is not acquired by listening to words but by experiences in the environment." - Maria Montessori



Payments of fees/charges

Cash payments must be made at the office. Please make sure you receive a receipt for all cash payments at the time of payment. Otherwise all monies must be placed in an envelope marked with your child's name, date and amount and handed over to a member of staff and signed for in the appropriate form.



Parents/Guardians Consultations

Parents/guardians meetings to discuss children's progress are scheduled to take place on Wednesday 25th and Thursday 26th January. Kindly complete the form at the reception desk specifying a convenient attendance time.

"As from April, the Nursery's operational hours will be open from 07h00-19h00."

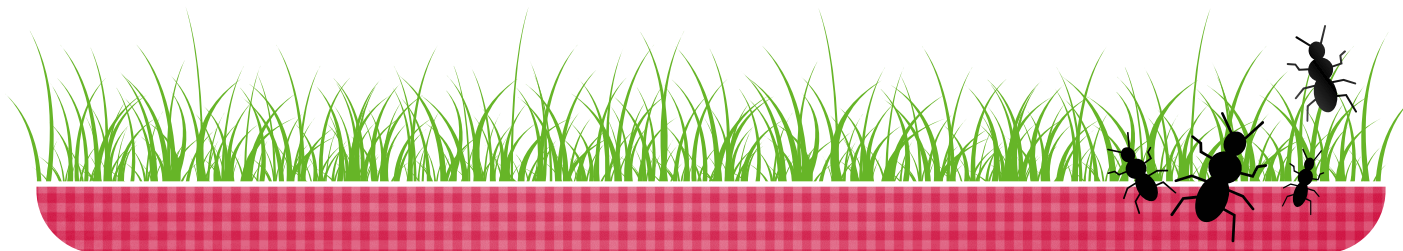
'Name the Cuddly Toy'

We are currently taking part in a fundraising event to support the Lennox Children's Cancer Fund. It is a competition to name the cuddly Meerkat toy. The winner of the competition will take home the cuddly meerkat. Participants will choose a name from a number card and pay a donation for the entry (we suggest £2 minimum donation). For more information, please see the notice at reception. We urge parents and guardians to take part in this event.



Forthcoming events

We are planning to have an Open Day and Cultural Day/Teddy Bears' Picnic in March. We are also planning to host a number of fundraising events to raise money for sports and computer equipment. Further details of these events will be available near the time.



Term Dates 2012

TERM	OPEN (start)	CLOSE (end)
SPRING	Tuesday 3 rd January	Wednesday 4 th April
Half-Term	Monday 13 th to Friday 17 th February	
SUMMER	Wednesday 11 th April	Wednesday 23 rd August
Half-Term	Monday 4 th to 8 th June	
AUTUMN	Monday 3 rd September	Thursday 20 th December
Half-Term	Monday 24 th to Friday 28 th October	
NURSERY HOLIDAYS	5 th & 10 th April, (23 rd and 24 th August Training days) 28 th , 29 th , 30 th & 31 st August, 21 st , 24 th , 27 th , & 28 th December.	
PUBLIC HOLIDAYS	2 nd January, 6 th & 9 th April, 7 th May, 4 th & 5 th June, 27 th August, 25 th & 26 th December.	
<p>Please note that the Nursery ends at 16h30 on the last day of term .</p>		

